

San Leandro Unified

District Overview

2021-2022



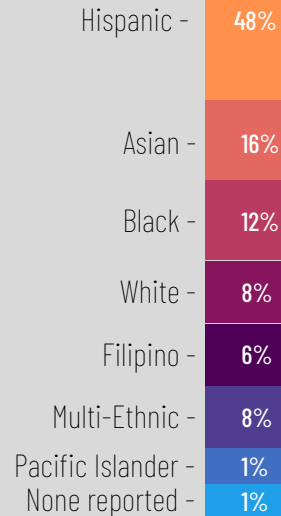
13
SCHOOLS

High School: 2 Adult : 1
Middle: 2 Charter: 0
Elementary: 8 Preschool: 0

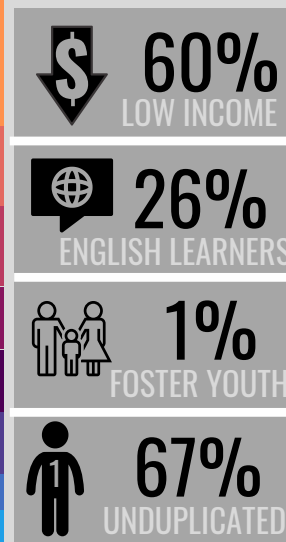


8,828
STUDENTS

STUDENT ETHNICITY

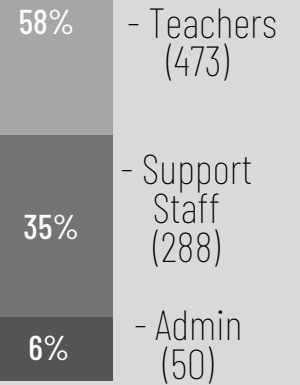


SUBGROUPS



811
FULL-TIME
EMPLOYEES

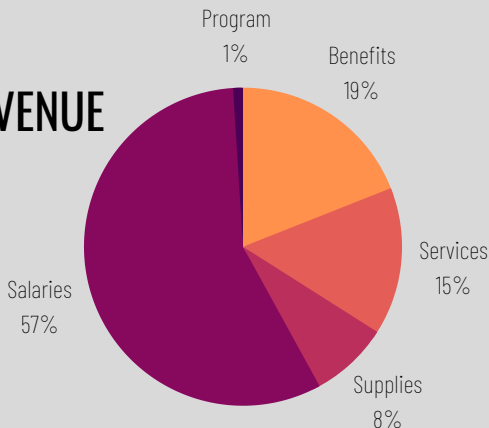
STAFF



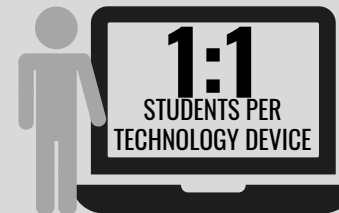
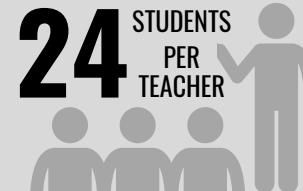
ANNUAL REVENUE



\$120,482,842



Employee Salaries: \$68,850,317 (57%)
 Employee Benefits: \$22,260,011 (19%)
 Services/Operations: \$18,090,041 (15%)
 Books/Supplies: \$10,155,972 (8%)
 Program Contributions: \$1,281,582 (1%)
 Total General Fund Expenditures: **\$120,842,272 (100%)**



San Leandro Unified
\$11,542/ Spent per Student annually

Nationally, California has ranked

